



Series Connection System Accessories



- **Junction Box Connection Kits for SRL, SRF and CWM Applications**
- **Splice and Tee Kits for SRL, SRF and CWM Cable Applications**
- **End Seal Kits for SRL, SRF and CWM Cable Applications**

Description

Accessories are fundamental to complete a heating cable installation. EL heating cable accessories include kits to connect the heating cable to power, splice the cable together and seal cable ends. Each model in the EL Series Installation Accessories for Chromalox Rapid Trace™ heating cable products is designed to satisfy the demands of a particular operation. These high-quality models combine a variety of functions in a convenient, easy to use and economical package.

Approvals

- UL*** Listed for use in ordinary areas
- CSA** Certified for use in ordinary areas
- FM**** Factory Mutual Certified for use in ordinary areas

* Does not include SSK
 ** Does not include SSK, PJB

Applications

Connection of selected Rapid Trace heating cables to customer supplied power wiring in any of the following applications:

- Freeze Protection
- Hydrocarbon and Chemical Product Piping
- Process Temperature Maintenance
- Fluid Flow and Viscosity Maintenance



EL - Accessories for Rapid-Trace™ Heating Cables

Installation Kits



**Junction Box Connection Kit
SSK
393617**

- (1) compression fitting
- (1) pipe stand off
- (1) tube of RTV sealant
- (1) O-ring
- (1) 1" locknut
- (1) self-regulating cable grommet
- (1) constant wattage cable grommet
- (1) silicone boot
- (2) uninsulated barrel connectors
- (2) insulated barrel connectors



**Splice & Tee Kit
(for use with CWM cable)
RT-TST
383566**

- (5) 7" long large heat shrink tubes
- (10) 1-1/2" long small heat shrink tubes
- (5) 10" lengths of sealant tape
- (15) uninsulated barrel connectors
- (1) tube of RTV sealant



**Rain Tight Junction Box
PJB
393676**

Polycarbonate watertight enclosure for use with SSK.



**End Seal Kit
(for use with SRL cable)
RT-RES
383574**

- (5) 1/2" diameter heat shrink caps



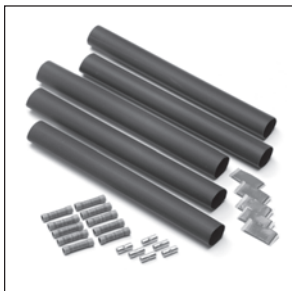
**Conduit Hub
w/Grounding Lug
CCH-2
385650**

Corrosion resistant hub for 3/4" conduit. Fits opening in RTPC and PJB. Includes ground connector.



**Caution Labels
CL-1
382424**

- (5) electric heat tracing caution labels; weather resistant.

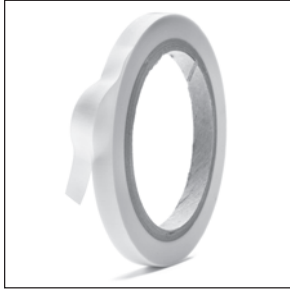


**Splice & Tee Kit
(for use with SRL cable)
RT-RST
383558**

- (5) 8" long heat shrink tubes
- (5) 1/2" lengths of sealant tape
- (10) insulated barrel connectors
- (5) uninsulated barrel connectors

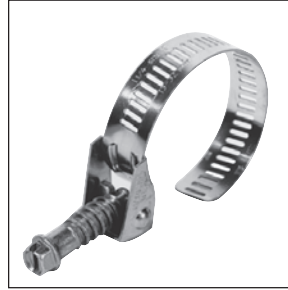
EL - Accessories for Rapid-Trace™ Heating Cables

Cable Attachments



Fiberglass Tape
FT-3
389941

Glass cloth tape with pressure-sensitive thermosetting silicone adhesive, 3/8" wide x 66' long. 310°F (155°C) rating. Strap at one foot intervals at minimum application temperatures are 40°F and 5°C.



Metal Pipe Strap
PS-1
382352

For 1/2" to 3/4" pipe size



Aluminum Tape
AT-1
383355

1 aluminum foil installation tape with pressure-sensitive acrylic adhesive. 2-mil thickness with high tensile strength; 2 1/2" wide x 180' long. 200°F (93°C) rating. Minimum application temperatures 40°F (5°C).



Metal Pipe Strap
PS-3
382360

For 1" to 3 1/2" pipe size



Cable Stripping Tool
w/16 awg Blades
ST-1
393510

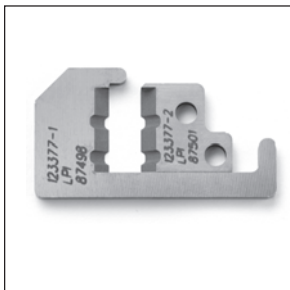
Tool for stripping the base jacket and the conductive matrix from the cable buss wires. The tool is stocked with 16 awg blades for stripping HSRL, SRL, SRL and Thermwire products.



Metal Pipe Strap
PS-10
382379

For 2-1/2" to 9" pipe size
Note: For use with RT-JBC and RT-RCL kits.

Interlock straps for larger diameter pipes.



Replacement Blades
14 awg
BL-1 393529

Blades for use with the Cable Stripping Tool. 14 awg blades for HSRM and SRM/E products.

16 awg
BL-2 393537

Blades for use with the Cable Stripping Tool. 16 awg blades for HSRL and SRL, SRF and Thermwire products.

20 awg
BL-3 393545

Blades for use with the Cable Stripping Tool. 20awg blades for SRR, SRS and STW products.

EL - Accessories for Rapid-Trace™ Heating Cables

PJ321-3
PDS EL
MARCH 07